

The background is a vibrant collage of abstract shapes and patterns. It features large, soft-edged shapes in shades of pink, yellow, and light green. Interspersed are various patterns: a cluster of small blue dots in the top left, a series of blue wavy lines in the top center, a yellow outline of a large, irregular shape in the top right, a dense pattern of small blue hearts in the middle right, and a yellow wavy line in the bottom right. The overall aesthetic is clean, modern, and playful.

Textiles Trend

Spring Summer 21

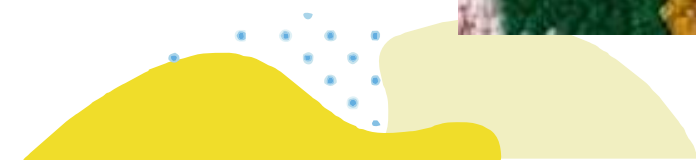


GameScape

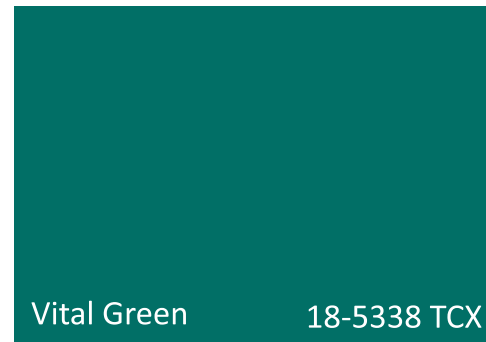
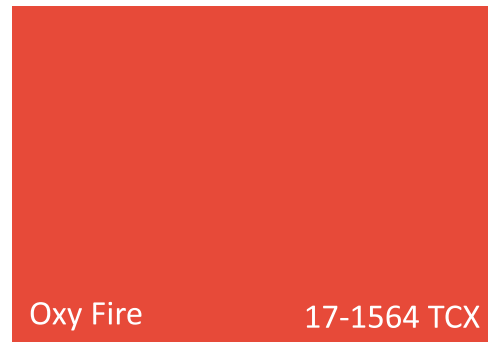
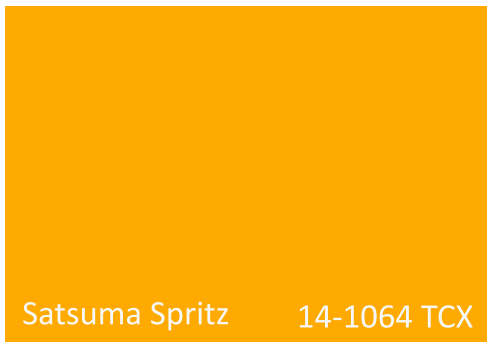
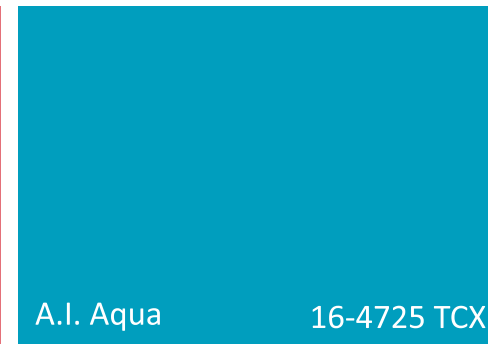
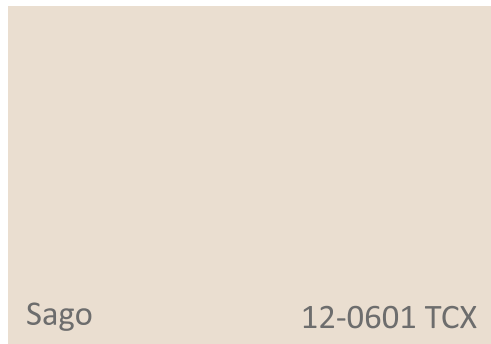
ACTION POINTS

GameScape explores the relationship between digital influences and physical designs, which will influence a more showy approach for textiles, with bold and tactile designs that offer a sense of fun and drama.

- **Redesign your textile waste:** find ways to repurpose industry waste in expressive ways. Work with material experts to make innovative yarns and materials from past-collection offcuts.
- **More is more:** be bold with pattern clashing. Take inspiration from archival collections, but reinterpret them in modern ways. Embellish and embroider motifs to build a unique narrative for collections.
- **Embrace tactility:** entice consumers with extreme textures and playful finishes, and add a sense of fun with fluffy, fringed and exaggerated shag trims.
- **Take a kitsch approach to craft:** take inspiration from vintage designs and reinterpret traditional crafts such as needlepoint, needle punch and crochet. Collaborate with artisans to elevate kitsch aesthetics for your product range.

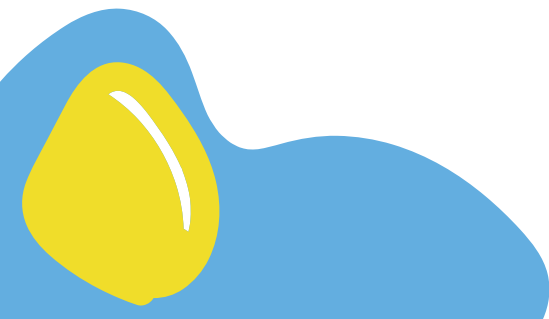


PANTONE TEXTILE



MOOD & COLOUR

Juxtapose natural colours with saturated tones for a vibrant look. Be bold with colour in this trend, and focus on A.I. Aqua as a key tone, offering a fresh look for interiors products. Use a range of colours in your designs to highlight crafted details and add a sense of depth and volume.



KEY DIRECTIONS



Intricate Weaves



Plush Play



Vibrant Patchwork



Archival Narratives



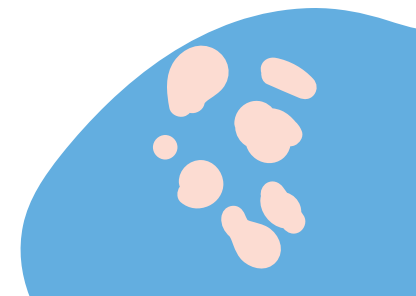
Kitsch Florals



Shag Trims



Eclectic Mismatch

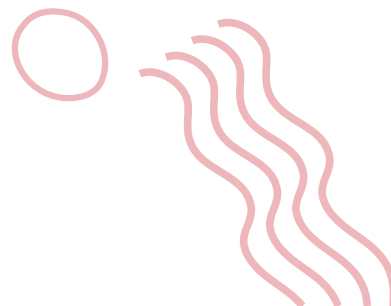


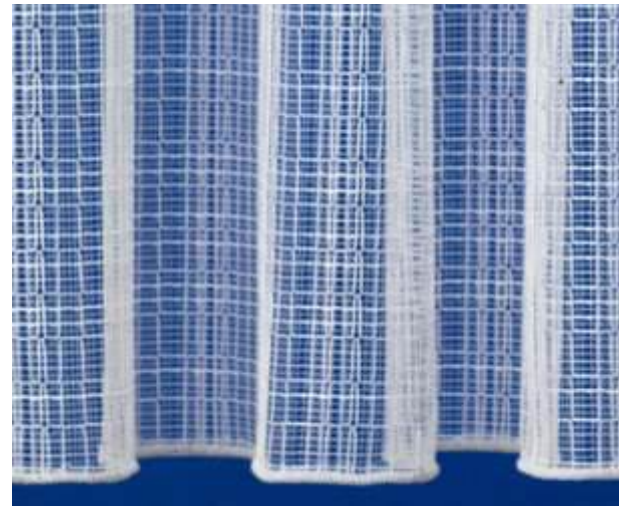
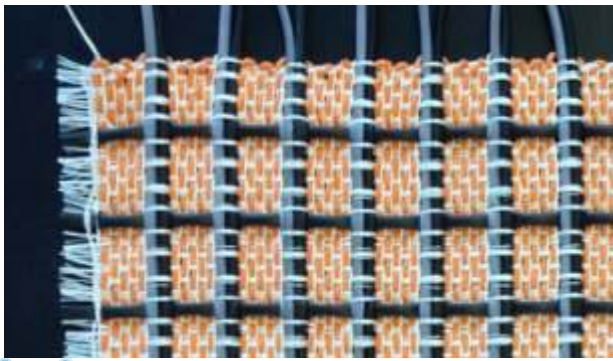


INTRICATE WEAVES

Make a vibrant statement with intricate weaves, using an assortment of yarns

- Use repurposed plastics and fibre waste to create new multicoloured yarns and interesting material combinations
- Use a range of materials, textures and band widths to create contrast and offer a fresh take on checks
- Incorporate contrasting yarns and chunky fibres into the construction of your textiles for a playful look. Woven designs can also be replicated via digitally printed textiles



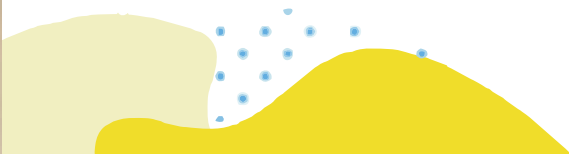


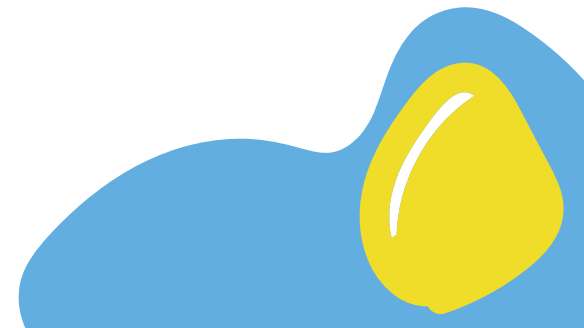


PLUSH PLAY

Use deep-pile and plush surfaces to create textiles goods with a cosy and tactile appeal

- Add texture to designs with fluffy fibres and shearling-inspired materials
- Use dense and tightly packed weaves in all-over coverings for everything from floor coverings to soft furnishings
- Test different techniques to create a playful look, from laser etching and handtufting to woven styles in abstract patterns – find what works to your brand's aesthetic



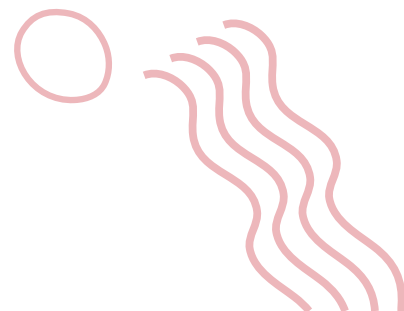




VIBRANT PATCHWORK

Update patchwork composites with a less traditional approach to construction and a focus on collage techniques

- Create products that look like they have been customised, or that can be customised by consumers, to tap into the appeal of make-and-mend trends
- Create a patchworked look without any stitching by using dévoré, jacquard and laser-etched techniques, or print for a more cost-effective approach
- Add texture by working overhead stitching into the surface





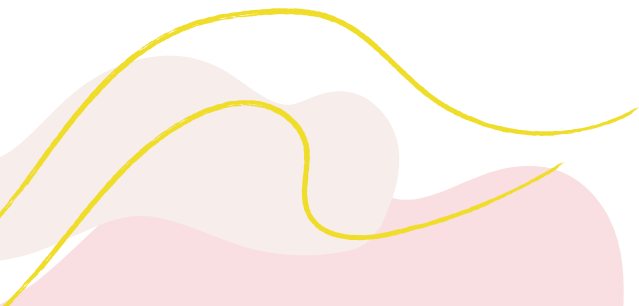


ARCHIVAL NARRATIVES

Heritage styles will remain important for S/S 21, but the focus should be on updating them with a modern twist

- Combine motifs and patterns from different eras to create a modern mix of unexpected patterns and details
- Enhance ornate designs and finishes by manipulating colour saturation. Pair light and dark tones for a dramatic look
- Mimic jacquards through heat-pressing or digital printing to create the illusion of a 3D weave





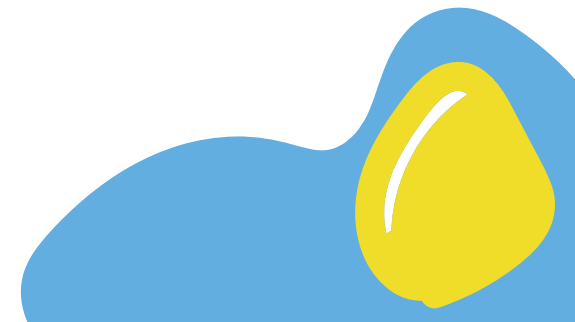


KITSCH FLORALS

Take craft in a kitsch direction by reinterpreting vintage floral designs with new and old textile treatments

- Update traditional florals with a maximalist aesthetic to create bold designs that will make a strong impact
- Combine a range of techniques to create unique textile finishes, including satin stitch and needlepoint embroidery, which can be reworked over patterned jacquards and knits
- Use needle punching to add unexpected texture to traditional weaves primary palettes, and use thin black stripes to add contrast and depth to designs



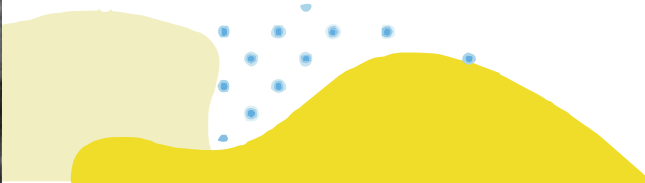


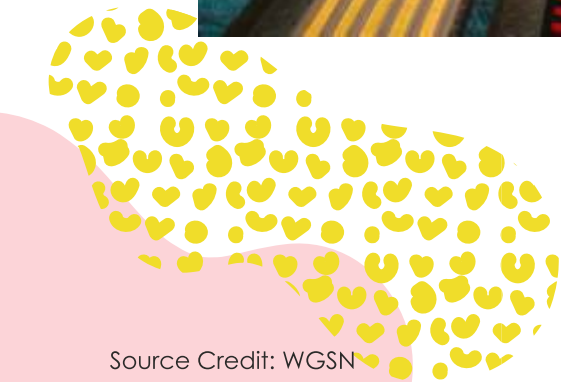


SHAG TRIMS

Full fringing will remain important for S/S 21, but take a sustainable approach by repurposing textile waste from the fashion and interiors industries

- Create over-the-top designs and details that will have Instagrammable appeal, both for home goods and in-store VM
- Use offcuts, scrap materials and leftover yarns to create exaggerated looks in a sustainable way
- Be bold with colour, and create a sense of depth and volume by using contrasting tones and textures





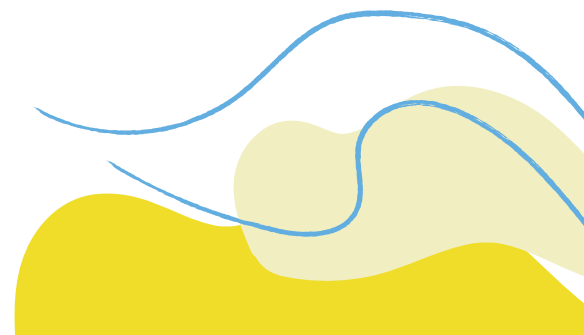
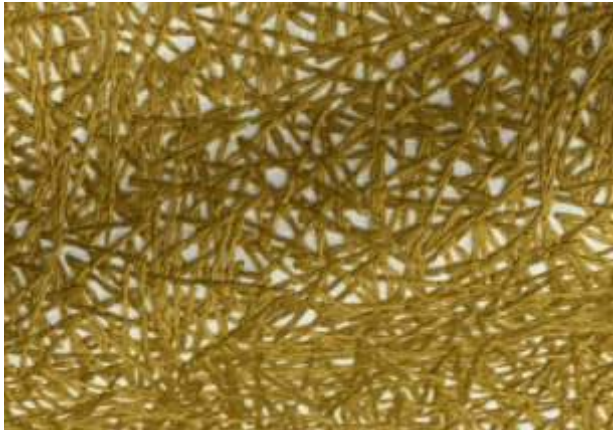
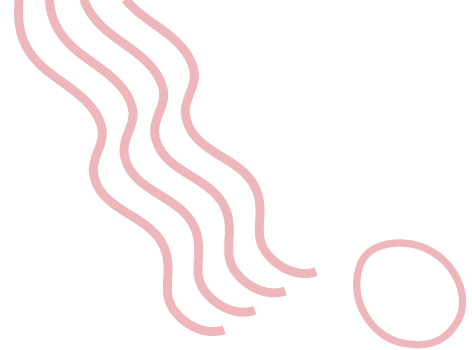


ECLECTIC MISMATCH

Post-consumer waste is becoming a more accepted element in design, and consumers in turn are becoming more receptive to mismatched, eclectic looks

- Celebrate mismatched designs by emphasising seams and patches with contrasting stitches and tufting
- Partner with different industries to create innovative textiles from offcuts and surplus material, building a collection that shows your commitment to reducing waste
- Add character to textile goods by recreating embroidered or lace details in a digital way, with a hand-drawn style







HomeSpun

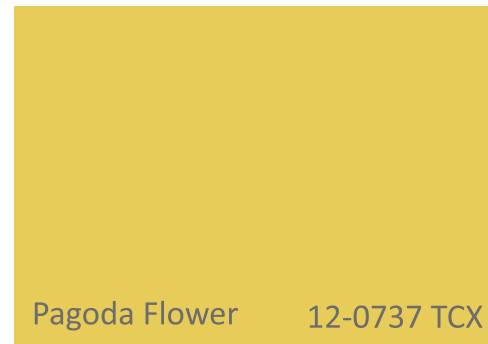
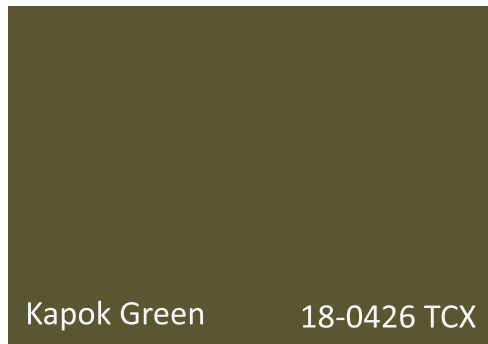
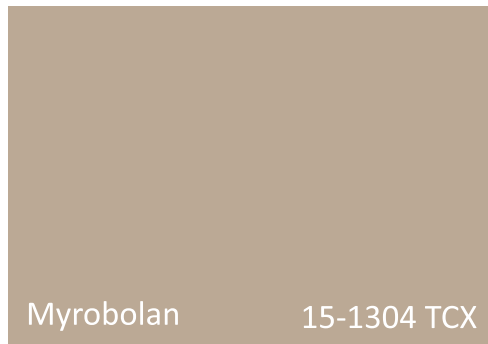
ACTION POINTS

HomeSpun takes a fresh approach to minimalism, celebrating fine and crafted techniques and constructions, with a focus on sustainable textiles that offer a natural look and feel.

- **Source ethically:** consumers are increasingly looking for transparency in the products they buy, so be sure to source ethically, include it on your labels, and communicate via social media.
- **Make and mend:** incorporate time-tested mending techniques into your textiles to give them a customised look. Take inspiration from Korean pojagi to give patchwork a refined update.
- **Focus on comforting, lived-in qualities:** HomeSpun is all about designs that feel familiar, rather than stiff, so explore how you can use crushed fibres and linens to give textiles a lived-in look.
- **Think local:** make connections in your local area to give collections a unique selling point. Collaborate with a craft studio, for example, or source regional wild grasses for inspiration.
- **Add mini surface interventions:** draw consumers in by incorporating small and decorative details in your weaves, or embellishing them on the surface.

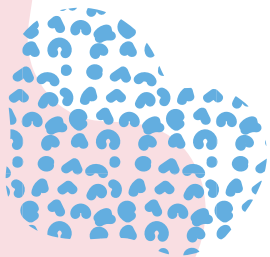


PANTONE TEXTILE



MOOD & COLOUR

The Homespun palette takes inspiration from plant-based pigments and organic fibres for a natural aesthetic. Add a sense of warmth to textiles with soothing neutrals that complement rich terracotta tans and browns. Bring attention to smaller details and artisanal craft techniques with subtle shifts in colour tones and intensities





KEY DIRECTIONS

Back to Basics



Crushed Fibres



Modern Plaids



Patchwork Craft



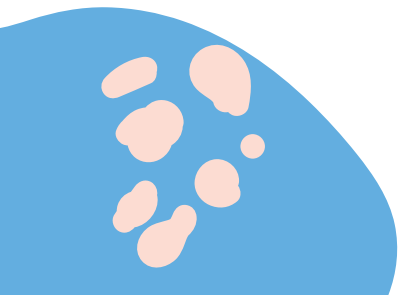
Fine Lines



Wild Grasses



Soft Sheen

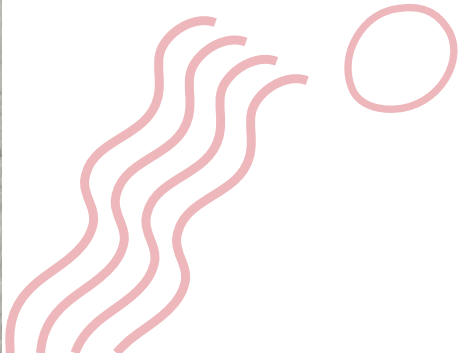


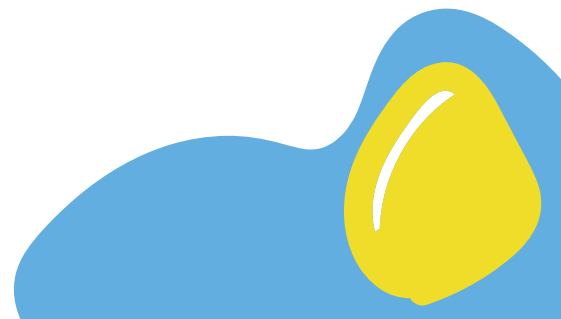
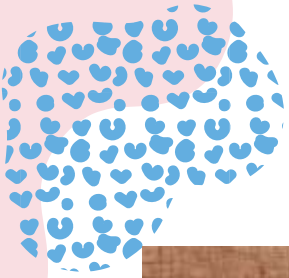


BACK TO BASICS

Use refined but basic textiles to create essential designs that will have long-term appeal

- Take a responsible and transparent approach when sourcing organic and fine yarns, and communicate this clearly through your labelling and marketing
- Use one all-over colour to make it easier for consumers to implement new items within existing homeware sets
- Add interest to everyday textiles by using space-dye yarns and fibres, resulting in a washed look that feels lived-in and relaxed



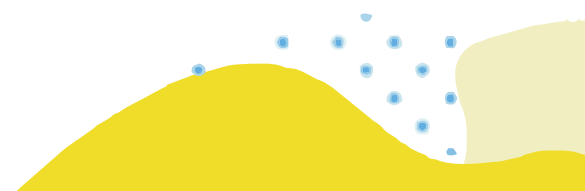


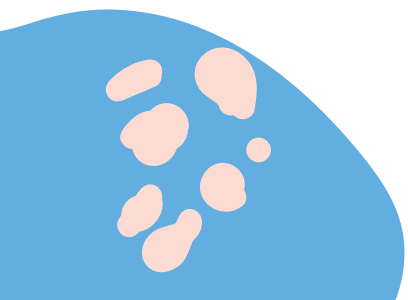
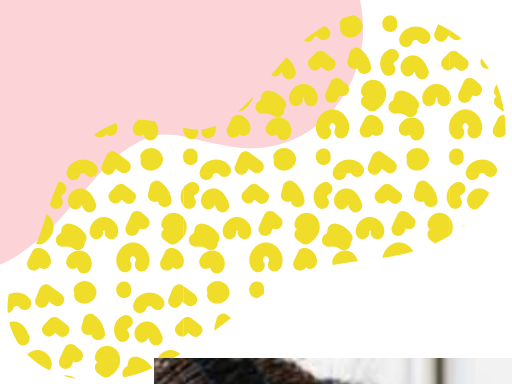


CRUSHED FIBRES

Natural fibres will remain popular, as consumers seek ethically sourced and organic textile homewares

- Jute, hessian and bamboo are key materials in this story. Source natural fibres that are less harmful to the environment, including those that are GOTS-certified
- Add texture to surfaces via organic yarns and untreated and undyed finishes. Use needlework over plain fabrics to create a variety of textures
- Create an authentic crafted look with frayed and raw edges – great for trims and finishes



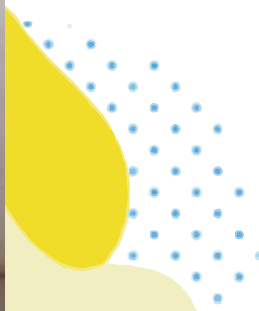




MODERN PLAIDS

Use colour, scale and composition to give heritage weaves and patterns a modern update

- Use earthy tones to refresh twills, tartans, gingham and plaids
- Experiment with stripes and diagonals in varying widths for a deconstructed look, and reinvent traditional styles with interchanging patterns
- Explore multiple techniques, including waffle knits, weaves and basketry, and collaborate with artisans to try new approaches and find a direction that suits your brand's outlook







PATCHWORK CRAFT

Use make-and-mend techniques to appeal to consumers who are seeking a more meaningful connection with their homewares

- Look to Korean pojagi and quilting techniques to update patchwork with a more refined look, and repurpose fabrics to reduce excess material waste
- Use frayed edges and loose threads to emphasise a crafted aesthetic
- Work with sheers, voiles and other lightweight materials to allow natural light to filter through drapes and wall art and highlight fragmented patterns





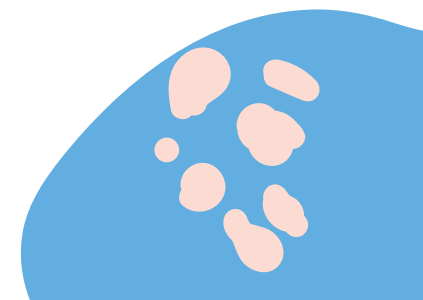


FINE LINES

Use discreet surface interventions to create a soft utilitarian look

- Dashes and small stripes are a key direction here, and can be filtered into the warp and weft of woven textiles, in both orderly and abstract placement
- Add tufting and embroidery in small densities to subtly raise patterned designs, and use bouclé yarns and cut jacquard trims for additional tactility
- Highlight fine lines and dashes in tonal colours for a sophisticated look, and use ticking stripes to create classic looks with a comfortingly retro appeal



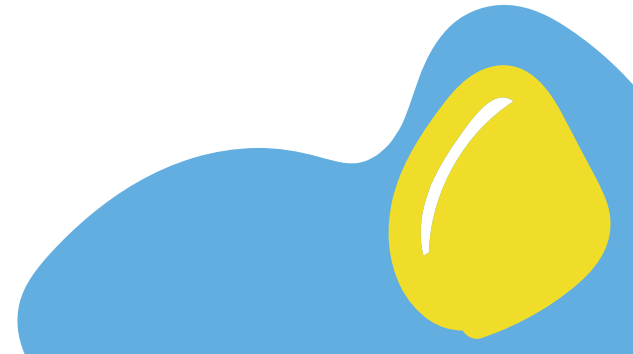
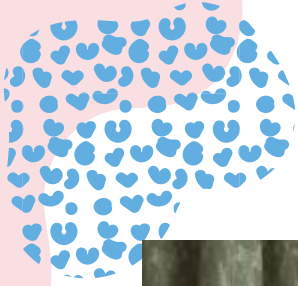


WILD GRASSES

Take inspiration from the wilder side of nature, and incorporate it in literal ways for decorative textiles

- For a uniquely local approach, take inspiration from wild grasses and weeds that are native to your area, both in urban and rural landscapes
- Embroider surfaces with satin and crewel stitch motifs – ideal for cushions and wall hangings – and complement prints with surface work
- Complement VM displays in-store with real or faux foliage



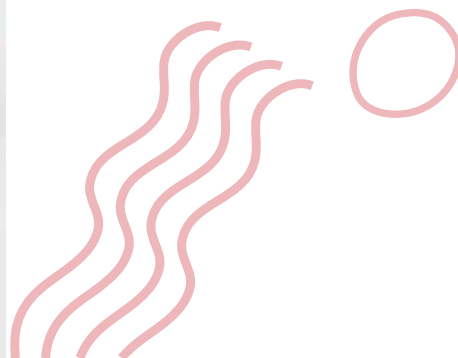




SOFT SHEEN

Use lustrous sheen and muted colours to create textiles with a sophisticated, luxurious appeal

- Use silky fibres to create softly lustrous textiles with a peach touch. Look into bamboo fibres for accent rugs
- Update velvet-inspired ranges for spring/summer with lighter pastel tones
- Add body to flat designs with quilted constructions, and stick to single colours to keep the focus on the tactility





TransForm

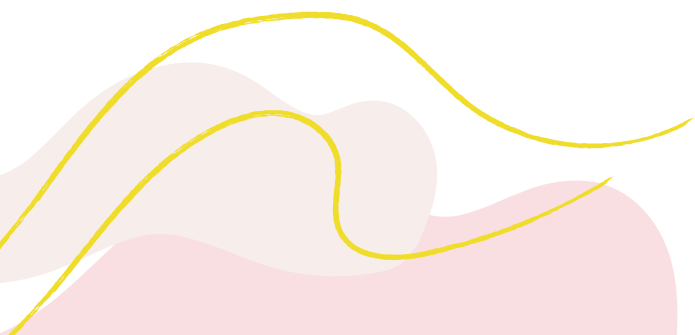
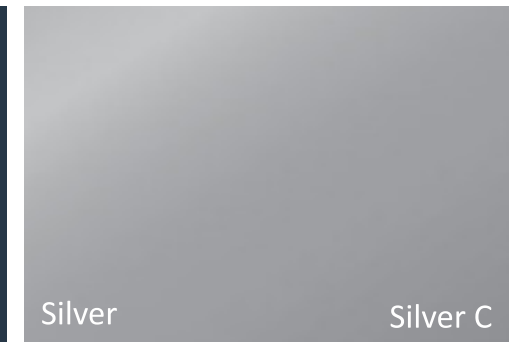
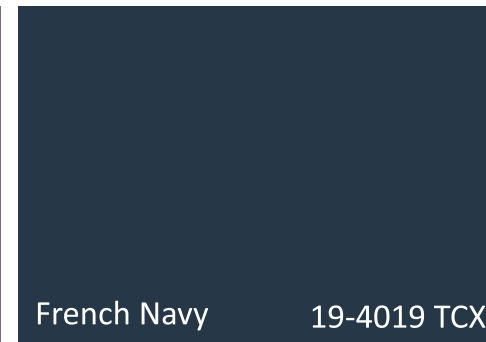
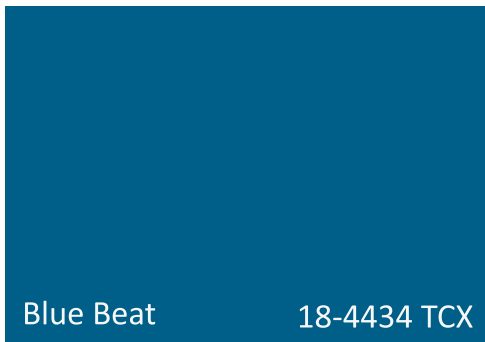
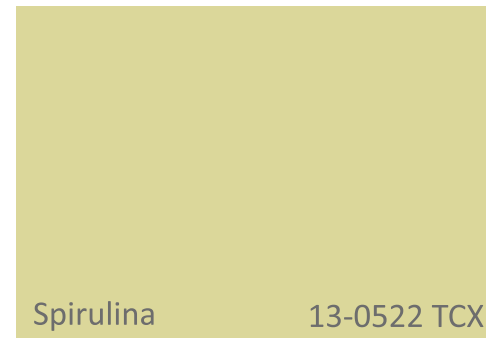
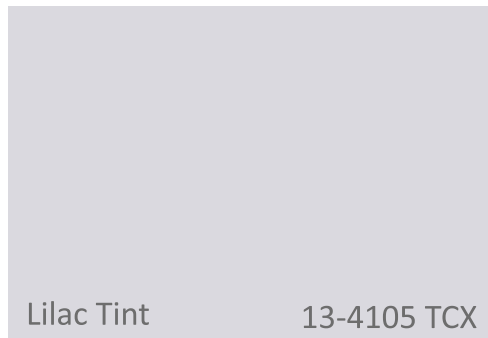
ACTION POINTS

TransForm explores the synergy between nature and science, with a focus on innovative fibres and design methods. For textiles, we will see a closer connection between digitally-made and crafted materials.

- **Take inspiration from the ocean:** as focus grows on water scarcity and ocean pollution, we will see designs embrace fluid textures and patterns, and motifs featuring sea shells and endangered species.
- **Combine lo-tech and hi-tech:** use hand-crafted techniques in conjunction with digital textile making, and experiment with digitally distorted effects and 3D finishes.
- **Explore bio-materials:** look at how you can invest in innovative engineering materials that will be applicable to interiors in the near future, drawing on the cross-over between industrial design, science and synthetic biology.
- **Focus on alluring and mysterious finishes:** use metallic yarns and printing foils to give textiles a lustrous or pearlescent finish, and layer iridescent and transparent fabrics to create an interplay between shadow and light.



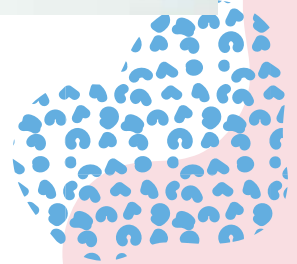
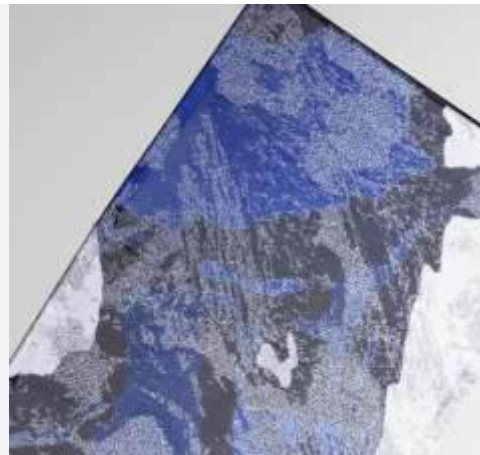
PANTONE TEXTILE





MOOD & COLOUR

The TransForm palette mixes darks and lights, and natural and artificial hues. Blues act as a foundation for this palette, inspired by the ocean. Purple and a metallic silver are included for pearlescent finishes, which can be embedded in the structure or used as a finishing foil.



KEY DIRECTIONS

Earth-Worn Dyes



Camouflage Skins



Rippled Effects



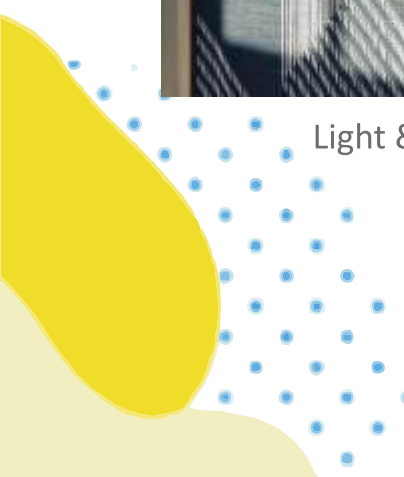
Light & Shadow



Diffused Pixels



Alluring Geometrics



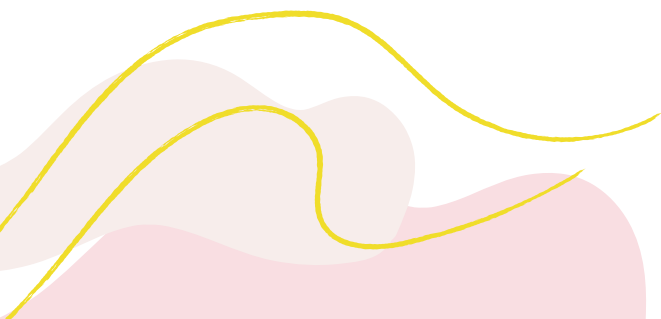
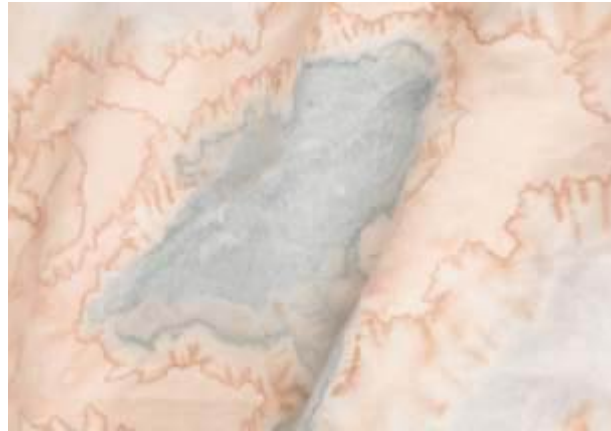


EARTH-WORN DYES

Take inspiration from raw and natural surfaces that can be recreated through woven and dyed textiles

- Experiment with dyeing fabrics to create bespoke patterns that recreate the look of stone or earthy textures
- Fold, pleat, or crush fabrics before dyeing and washing for an organic finish. Scan in original artwork to digitally manipulate on to a larger scale
- Combine digital patterns with contrasting colours to create the illusion of a 3D finish





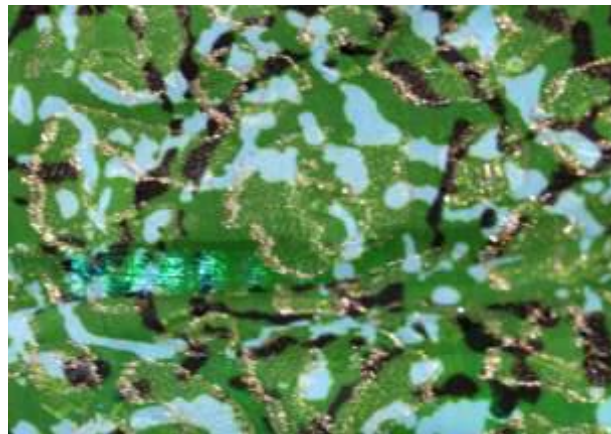
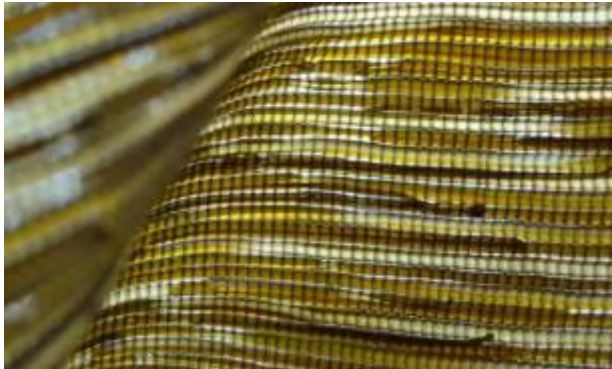
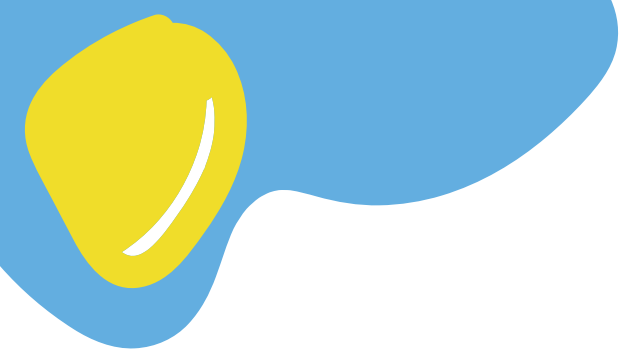


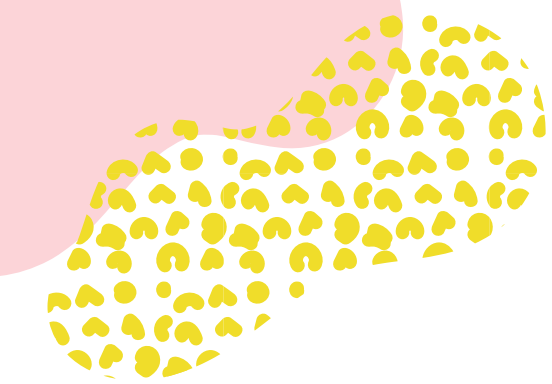
CAMOUFLAGE SKINS

Take an engineered approach to nature with digital camouflage patterns, as well as new developments in bio-materials

- Explore how you can harness nature by using algae to create renewable textiles
- Take a mathematical approach to pattern, using fractals to transform natural inspirations into abstract designs
- Add texture to surfaces with 3D knitted fabrics and double-faced jacquards. Incorporate or layer metallic yarns and foils in textiles to create an iridescent sheen





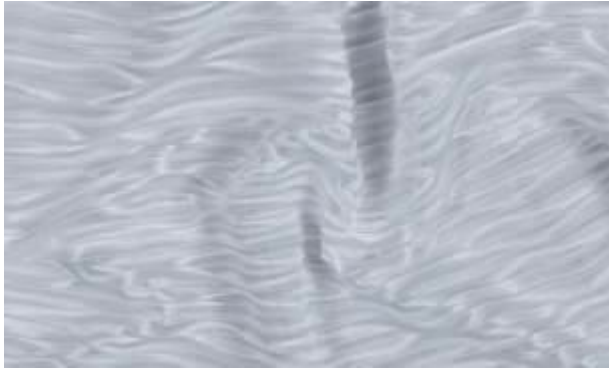


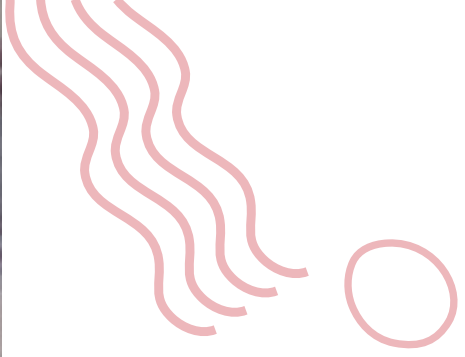
RIPPLED EFFECTS

Focus on aquatic inspirations to create textiles that evoke rippling water, giving designs a sense of movement

- Add volume to textile surfaces to create ripple effects. Appliqué and laser etching will work well to add definition to waves, and jacquard can be used for designs featuring a variety of weights
- Explore hi-tech 3D knitting techniques to develop interesting surfaces with midweight cottons and recycled plastics
- For a more directional approach, add hyper-textured interventions such as tufting, quilting and bouclé yarns



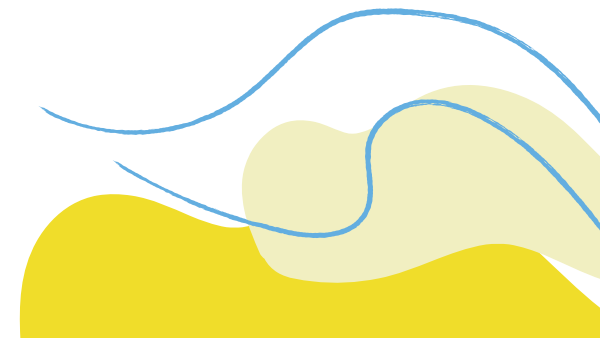




LIGHT & SHADOW

Explore the interplay of light and shadow to give summer textiles a lightweight look and feel

- Experiment with layering gradients in weave constructions. Use a white ground to heighten the overlap of shapes, or use subtle tonal shifts of darks for a look that will have year-round appeal
- Transparent fabrics such as voiles and chiffons are a directional way to achieve this look – great for drapes and temporary room dividers. Include devoré techniques for decorative textile goods





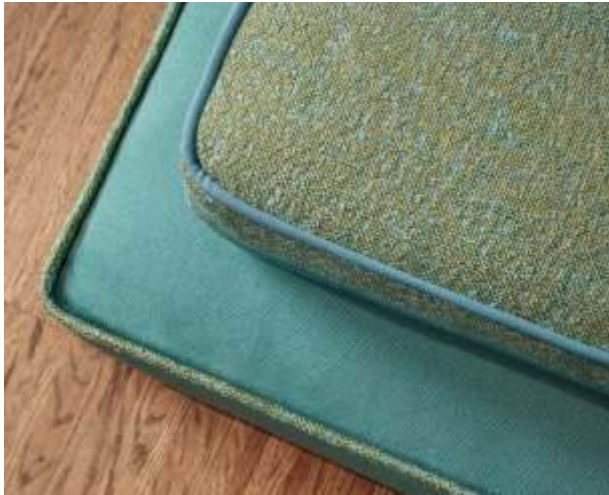
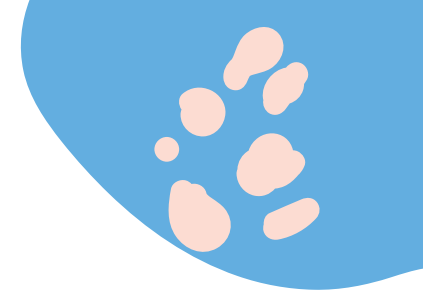
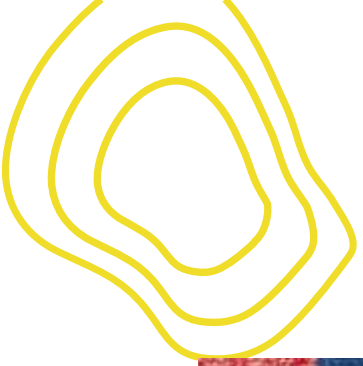


DIFFUSED PIXELS

Incorporate speckled and diffused colour effects in woven textiles for a digital aesthetic

- Use refined threads and bouclé yarns to create a smooth-to-grainy finish with a pixellated colour gradation
- Speckled effects can be easily produced in multiple colours for commercial textiles
- Add colour shifts around cutout shapes to create inverted and energetic patterns







ALLURING GEOMETRICS

3D geometrics will remain on-trend for S/S 21, with a focus on finer constructions and softer materials

- Explore how you can add structure to lightweight fabrics such as cotton, chiffon and velvets
- Use heat-press and seersucker techniques to give textures an origami-like precision, even in smaller scales
- Use stitch detailing to keep press and fold designs in place – ideal for ornate cushions and pouffes
- For fast production lines, use digital knit technology to recreate one design in multiple sizes



